

Paper #7: Statistics

By Robert Kieft, Haverford College, and Peggy Seiden, Swarthmore College

This document consists of two parts: the first is a group of charts which show averages for the Oberlin Group according to 10 years' worth of Oberlin Group Annual Survey data for several collections indicators covered by the Survey questions. The eight charts are:

Average of Oberlin Group Total Print Collections
Average Total Acquisitions Expenditures*
Monograph and Serial Expenditure Averages*
Average Number of Books and E-Books Added by Purchase
Periodical and Serial Titles Received*
Average Number of Circulations Per Student*
ILL Borrowing Averages, including percentage changes*
ILL Lending Averages, including percentage changes*

Chart titles with asterisks (*) indicate graphs plus accompanying numeric data sheets

The statistics overall contain no big surprises. Of note are the ILL graphs, which show that overall lending is up 71%, lending of returnables is up 114%, and lending of articles is up 5%; overall borrowing is up 40%, borrowing of returnables is up 92%, but article borrowing is down 6%. Also, in the monograph and serial spending chart, the dip in serial expenditures for 2004/05 and 2005/06 may be due to underreporting rather than actual reductions in serial spending.

Special thanks to Barbara Weir, Associate Librarian for Technical Services and Digital Initiatives, Swarthmore College, for compiling this data.

The second portion of the paper will consist of the results of a 17-item questionnaire for conference participants. The questionnaire will collect information that complements the numerical data collected during the annual Oberlin Group survey. Participants have been asked to complete the survey by September 3, 2008, and results will be posted here when they are available.

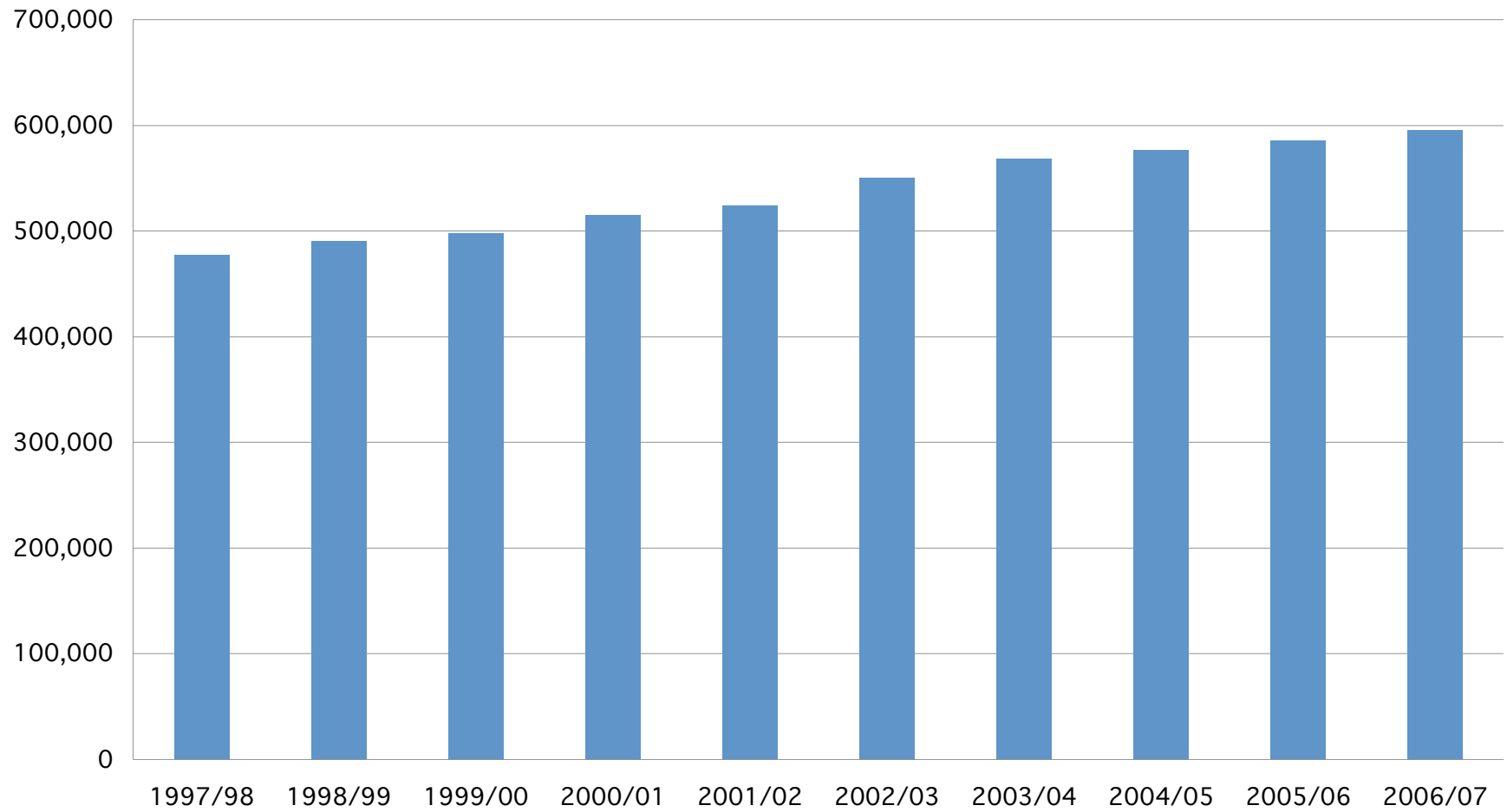
The URL for the survey is:

http://www.surveymonkey.com/s.aspx?sm=hK9oD2nTZhq_2fjaxMhUlf5g_3d_3d

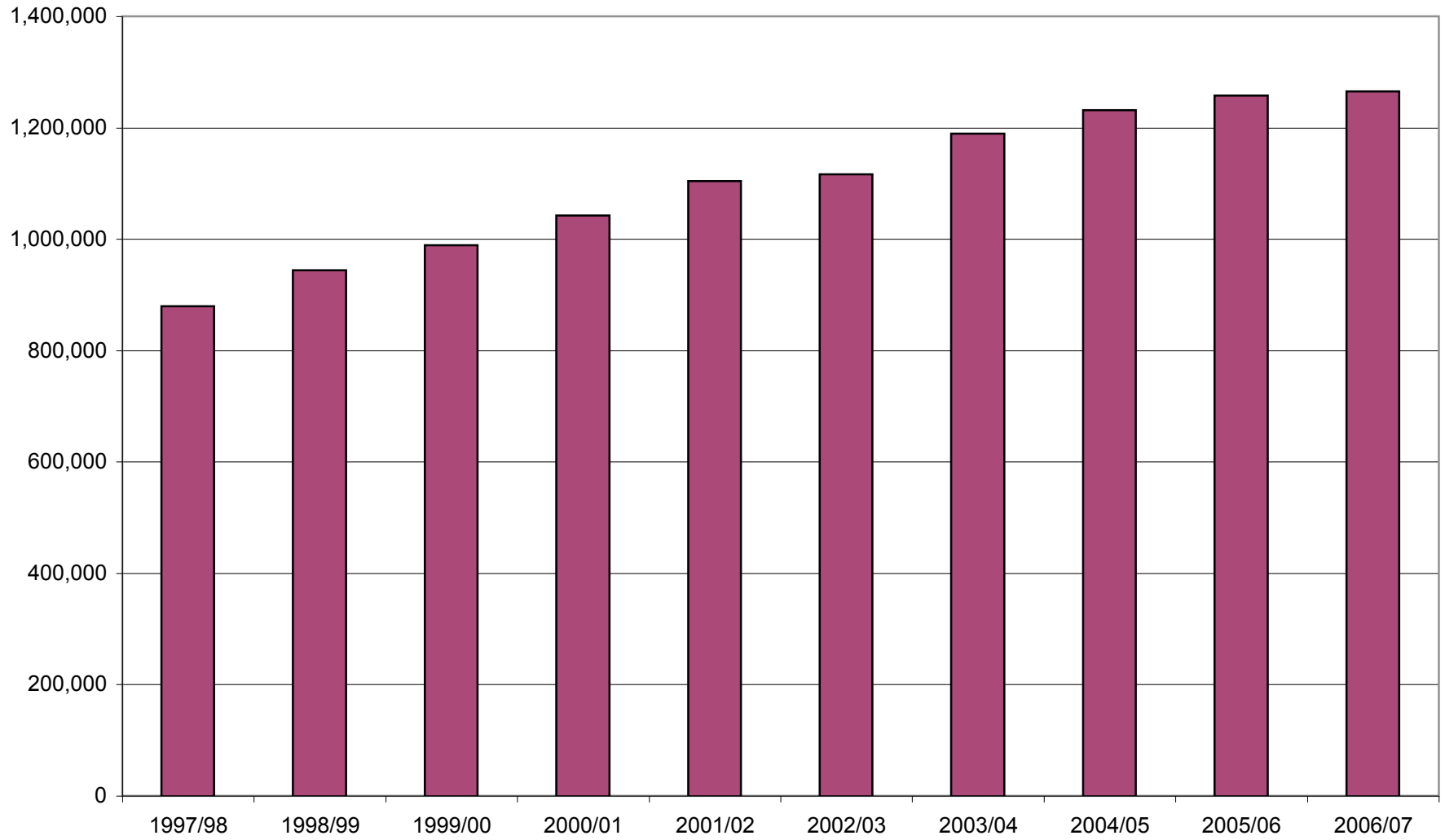
A printable copy of the survey is also available, at:

http://www.haverford.edu/library/surveys/shaping_collections_survey.pdf

Average of Oberlin Group Total Print Collections



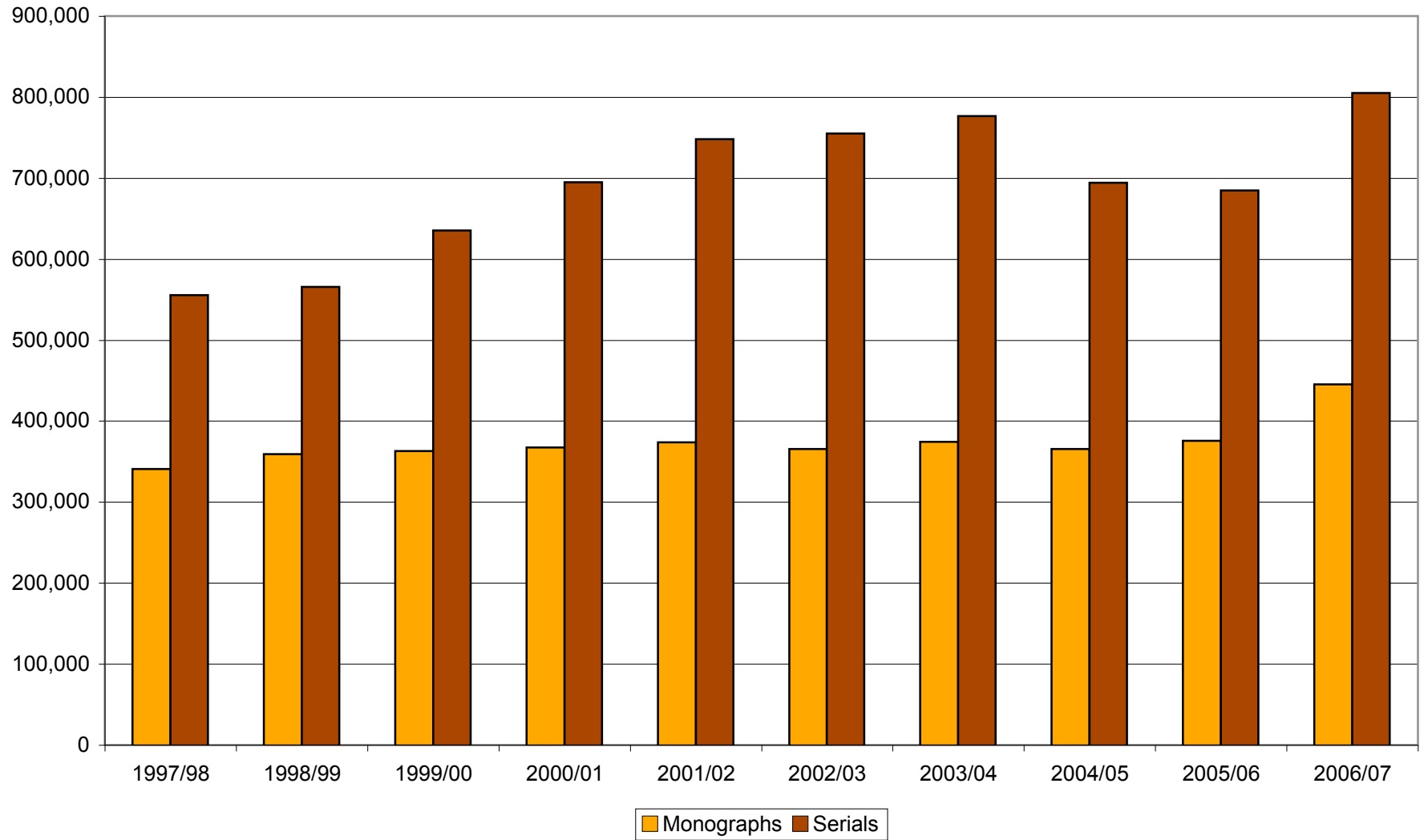
**Average Total Acquisitions Expenditures
1997/98-2006/07**



	1997/98	1998/99	1999/00	2000/01	2001/02	2002/03
Total Acquisitions Expenditures	878,997	944,321	988,598	1,041,878	1,103,643	1,116,643
% increase		7%	5%	5%	6%	1%

2003/04	2004/05	2005/06	2006/07	10 year change
1,189,037	1,231,569	1,257,248	1,265,278	
6%	4%	2%	1%	44%

Monograph and Serial Expenditure Averages 1997/87-2006/07

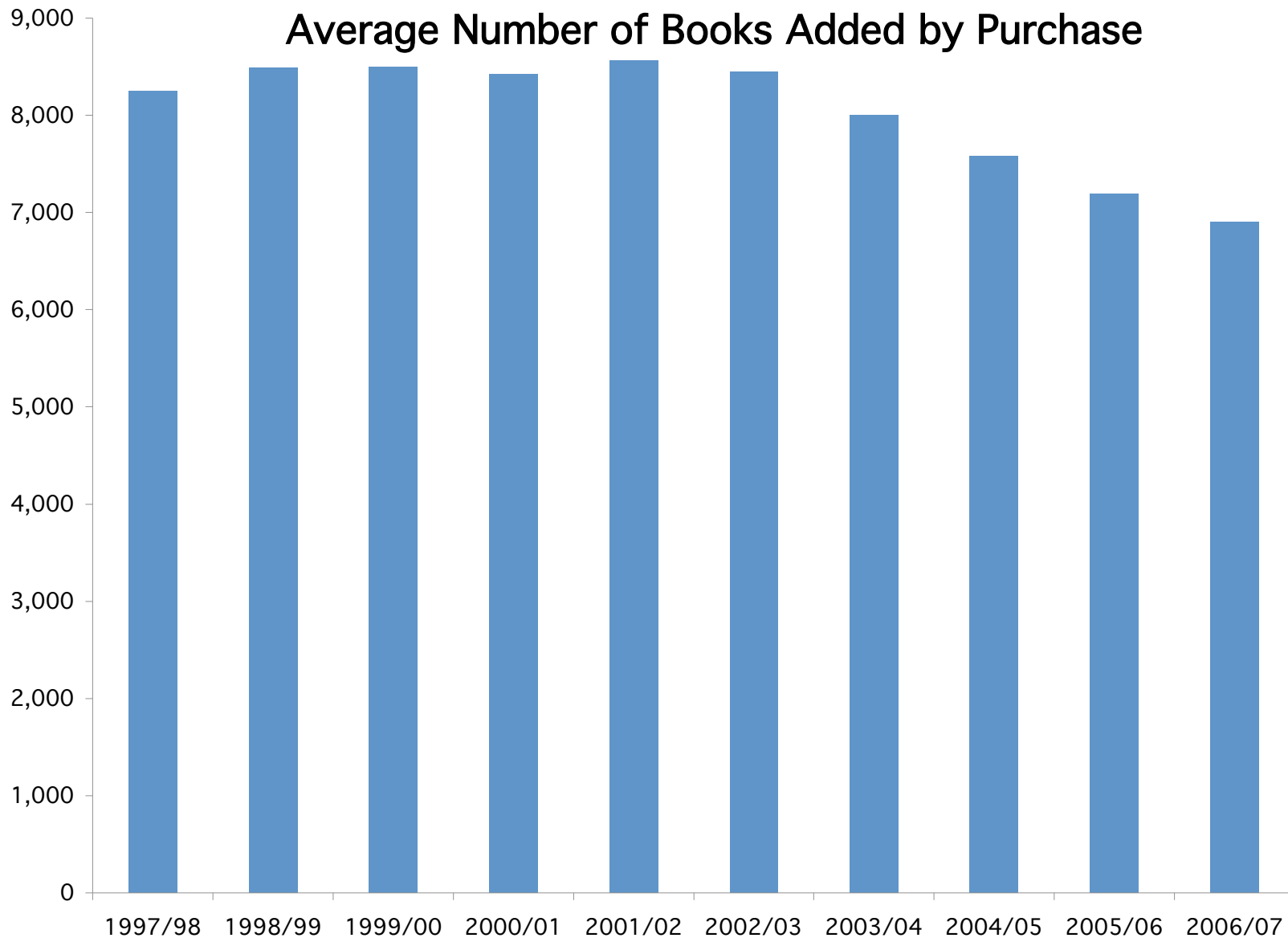


Spending- Books vs. Serials

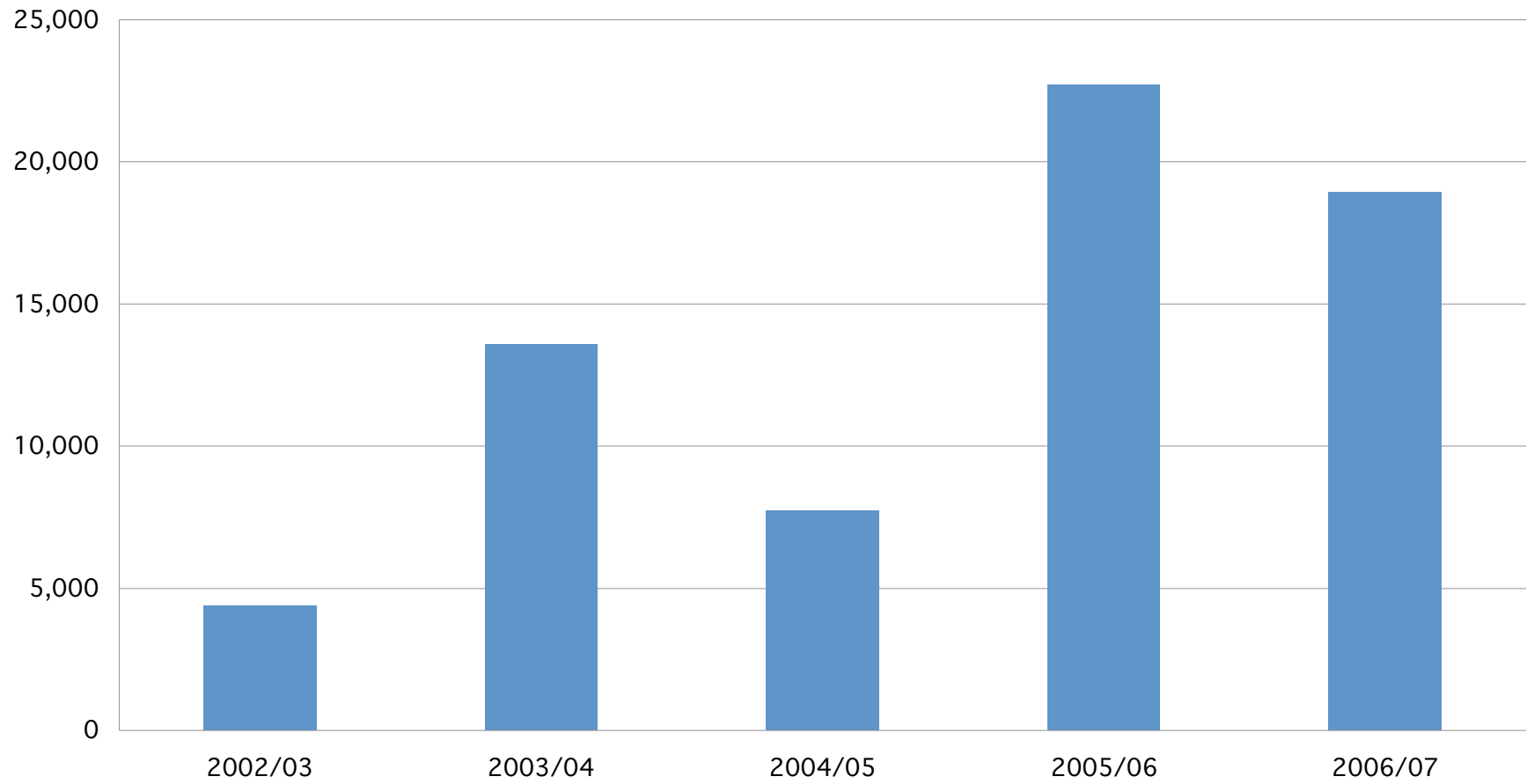
	1997/98	1998/99	1999/00	2000/01	2001/02	2002/03	2003/04
Monographs- print	329,056	349,012	348,990	350,136	360,379	347,384	350,707
Monographs- electronic	11,503	10,173	13,733	17,274	13,506	17,996	23,529
Monographs	340,560	359,185	362,723	367,410	373,885	365,380	374,235
Serials- print	476,092	468,368	520,885	538,616	555,155	544,059	527,283
Serials-electronic	79,374	97,378	114,688	155,892	192,957	210,747	249,040
Serials	555,466	565,746	635,572	694,508	748,112	754,806	776,323

2004/05	2005/06	2006/07	10-yr change
348,899	356,811	387,431	
16,496	18,812	57,505	
365,395	375,623	444,936	31%
432,145	402,584	417,327	
262,079	282,119	387,738	
694,224	684,703	805,065	45%

Average Number of Books Added by Purchase



Average Number of E-Books Added by Purchase 2002/03-2006/07



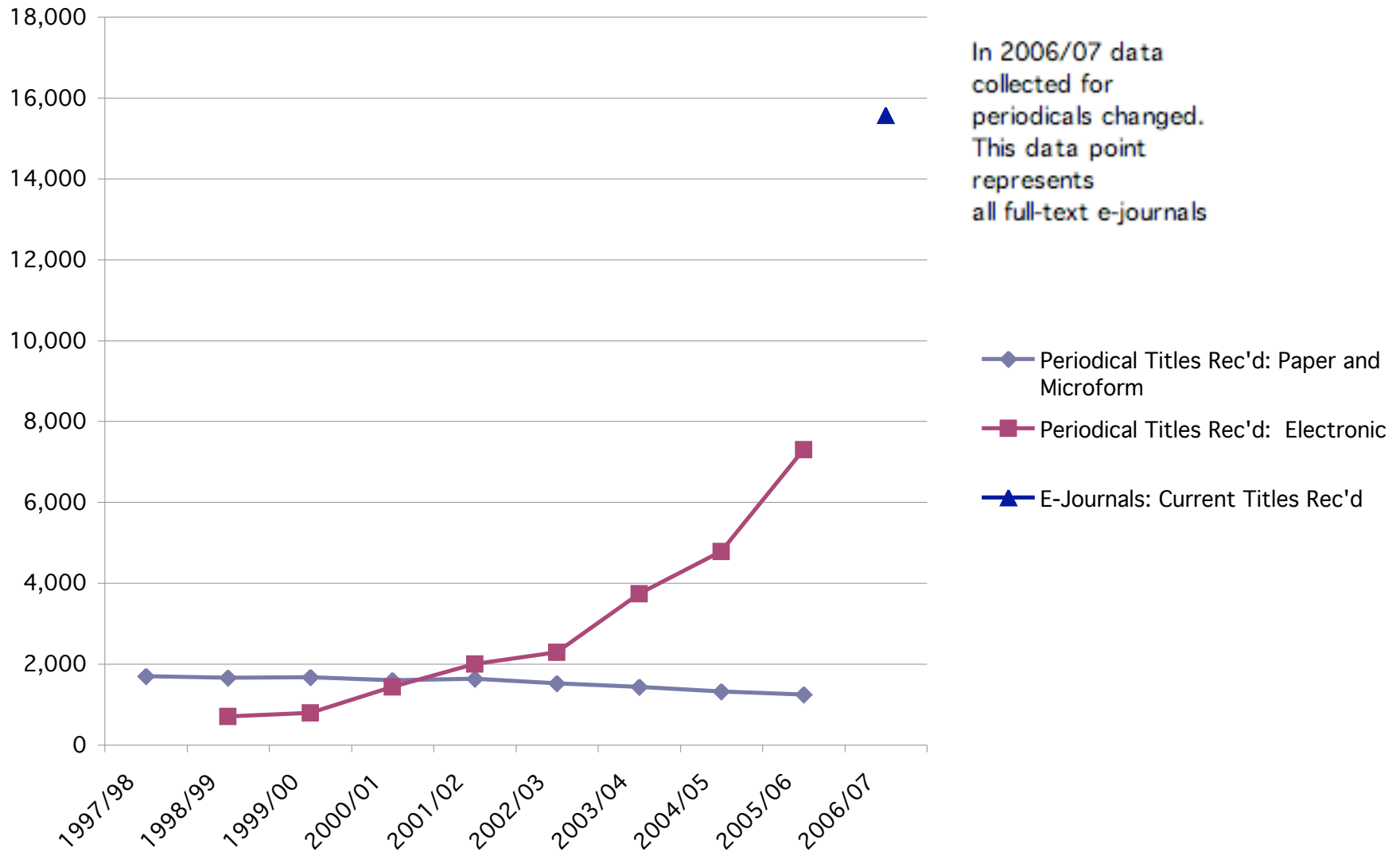
	1997/98	1998/99	1999/00	2000/01	2001/02	2002/03	2003/04
Book vols added by purchase	8,250	8,493	8,499	8,422	8,565	8,448	8,004
% change		3%	0%	-1%	2%	-1%	-5%
 Book vols added by purchase: E-Books						4,374	13,565

2004/05	2005/06	2006/07	10 year change
----------------	----------------	----------------	-----------------------

7,581	7,192	6,908	-1,342
-5%	-5%	-4%	-16%

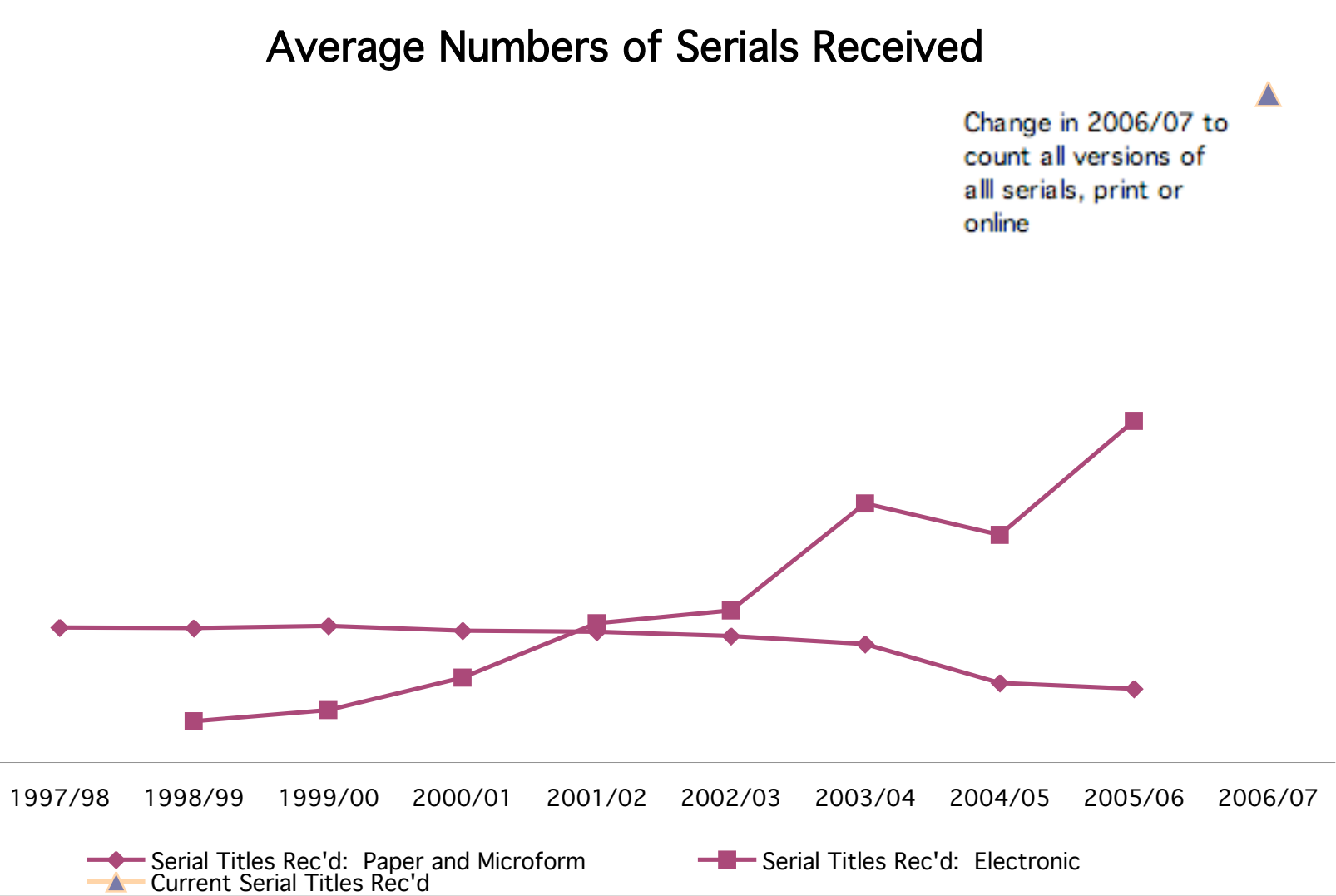
7,753	22,724	18,936	
-------	--------	--------	--

Periodicals Received Averages



Average Numbers of Serials Received

Change in 2006/07 to
count all versions of
all serials, print or
online



	1997/98	1998/99	1999/00	2000/01	2001/02	2002/03	2003/04
Periodical Titles Rec'd: Paper and Microform	1,696	1,660	1,669	1,602	1,640	1,518	1,429
Periodical Titles Rec'd: Electronic		705	798	1,433	1,998	2,291	3,739
E-Journals: Current Titles Rec'd							

	1997/98	1998/99	1999/00	2000/01	2001/02	2002/03	2003/04
Serial Titles Rec'd: Paper and Microform	2,532	2,521	2,567	2,473	2,450	2,367	2,225
Serial Titles Rec'd: Electronic		767	984	1,589	2,613	2,853	4,864
Current Serial Titles Rec'd							

Changes for 2007:

Current Serial Titles Received - Total Number:

Report the number of titles in all formats.

If the title comes in both paper and electronic form, count it twice.

Count each individual title if it is received as part of a publisher's package.

Include paper and microfilm government documents issues serially if they are accessible through the library's catalog

Report indexing and abstracting services that may contain full-text in line C13. (From ALS)

C12. E-journals - Current Titles Received :

Total number of e-journals available. This would be a combo of e-journals subscribed to and e-journals available through aggregators.

These are complete journals, such as those found in Project Muse, JSTOR, ACS, ACM, etc.

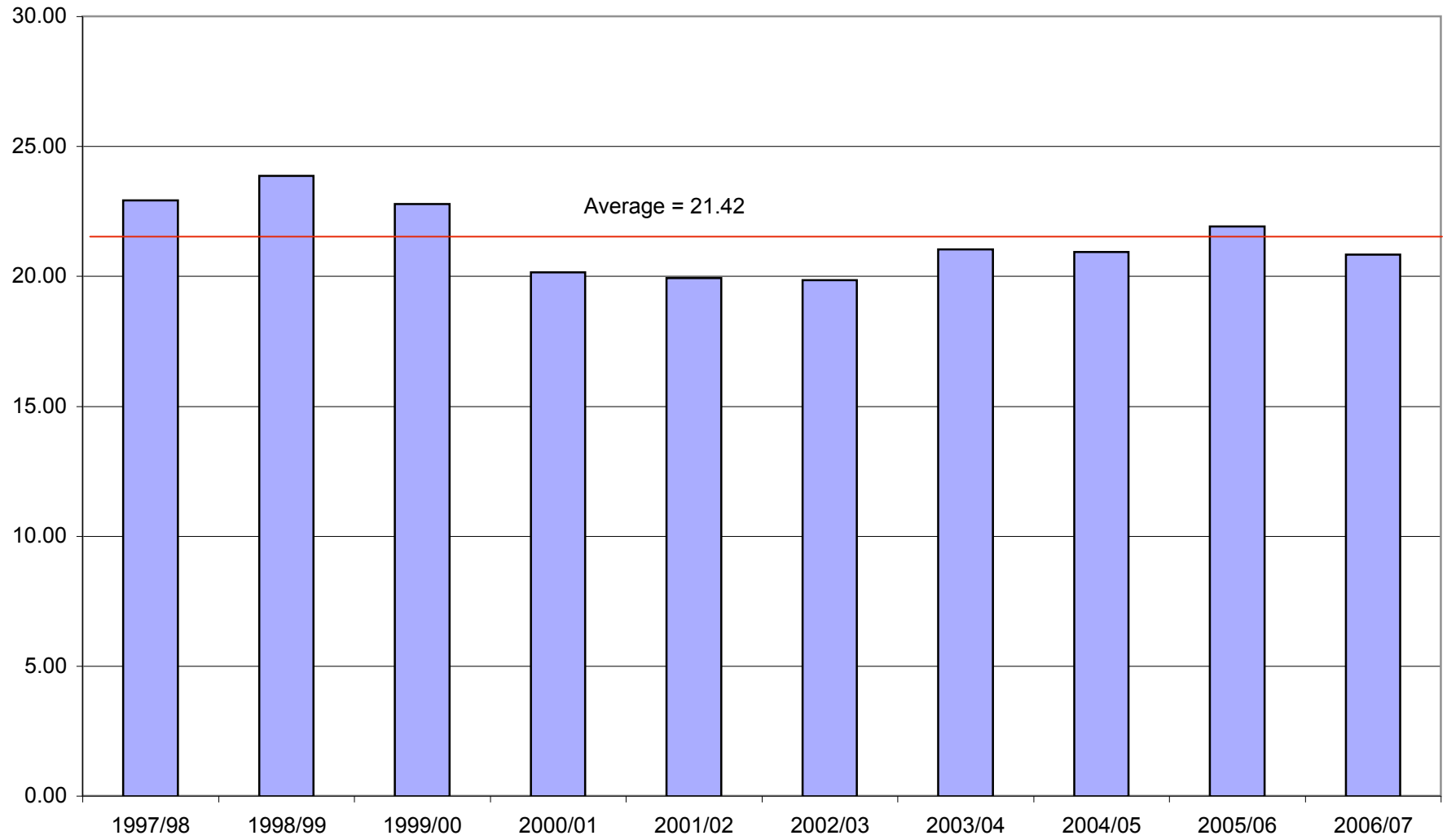
Do not include journals that are not cover-to-cover, full text subscriptions.

Note: As more libraries move to electronic only content, we were requested to track the changes over time.

2004/05	2005/06	2006/07	10 year change	
			number	% change
1,321	1,247			
4,784	7,302			
		15,567		

2004/05	2005/06	2006/07	10 year change	
1,493	1,383			
4,275	6,415			
		12,568		

**Average Number of Circulations per Student
1997/98-2006/07**

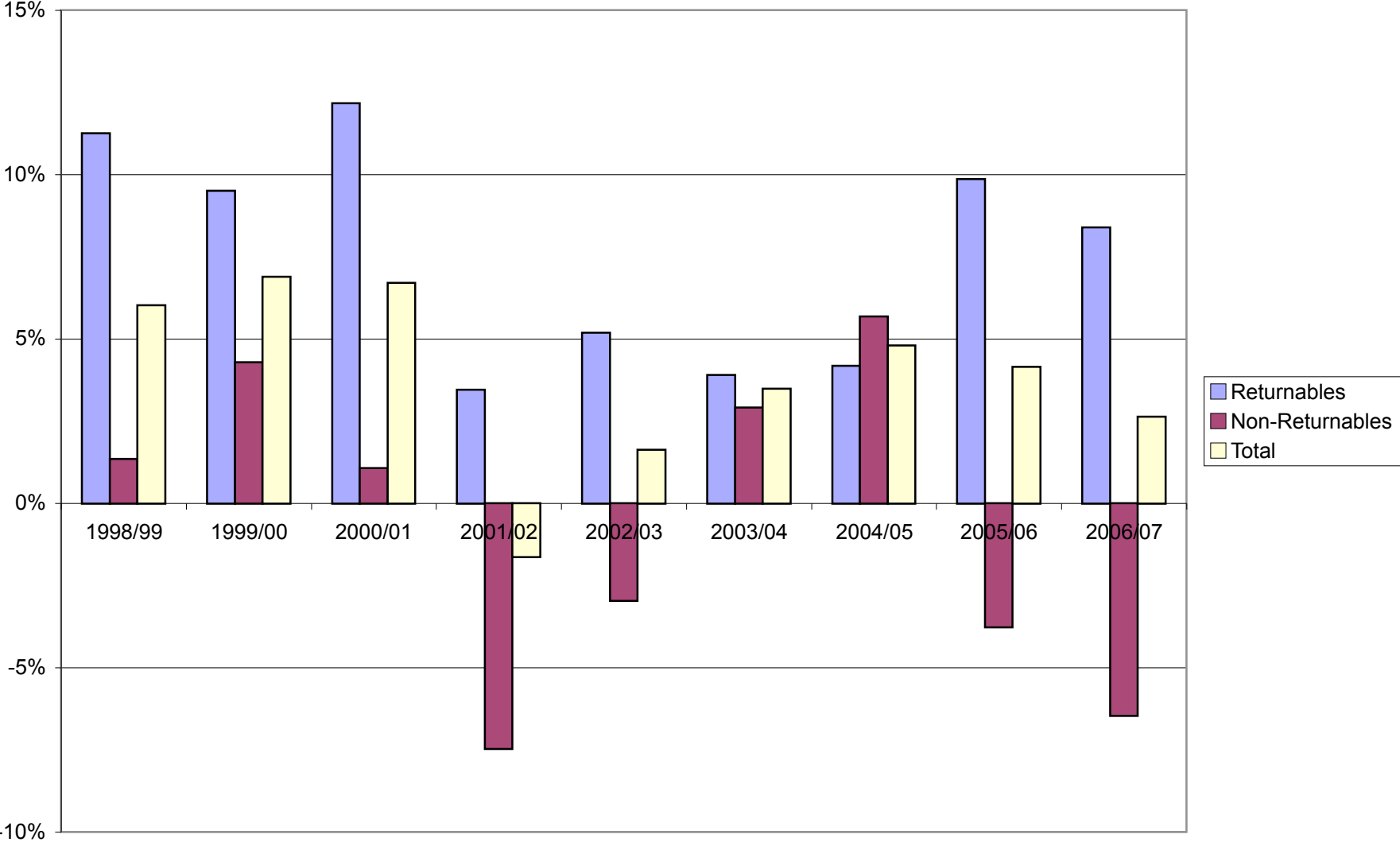


Average circulation per student

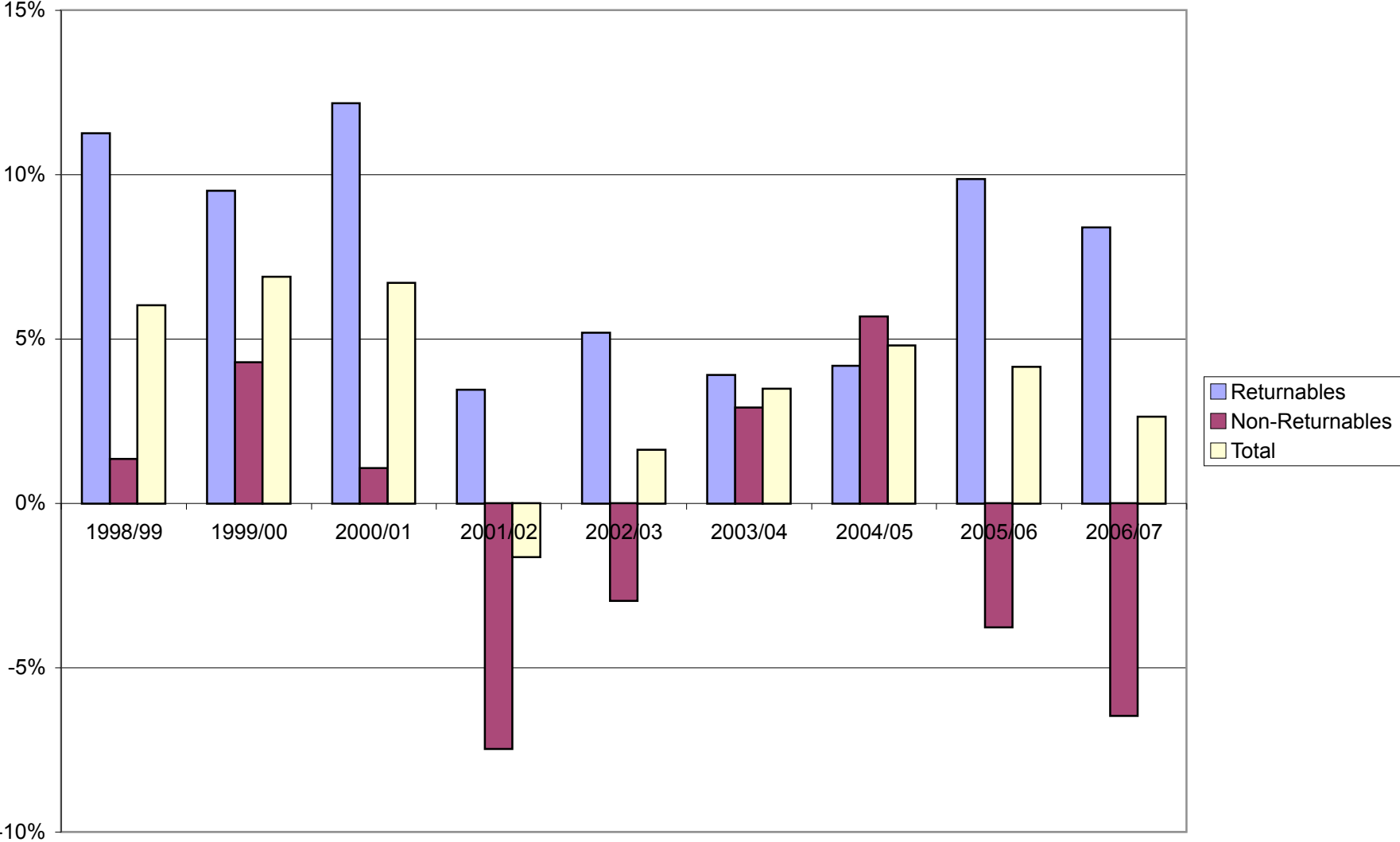
	1997/98	1998/99	1999/00	2000/01	2001/02	2002/03	2003/04	2004/05
Ave. no of student circs	44,307	46,347	44,383	39,853	39,761	39,849	43,376	43,330
Ave. no of students	1,934	1,942	1,949	1,979	1,995	2,007	2,062	2,071
Circs per student	22.91	23.86	22.77	20.14	19.93	19.85	21.04	20.92

2005/06	2006/07	10 year change
45,288	45,910	
2,067	2,205	
21.91	20.82	21.42

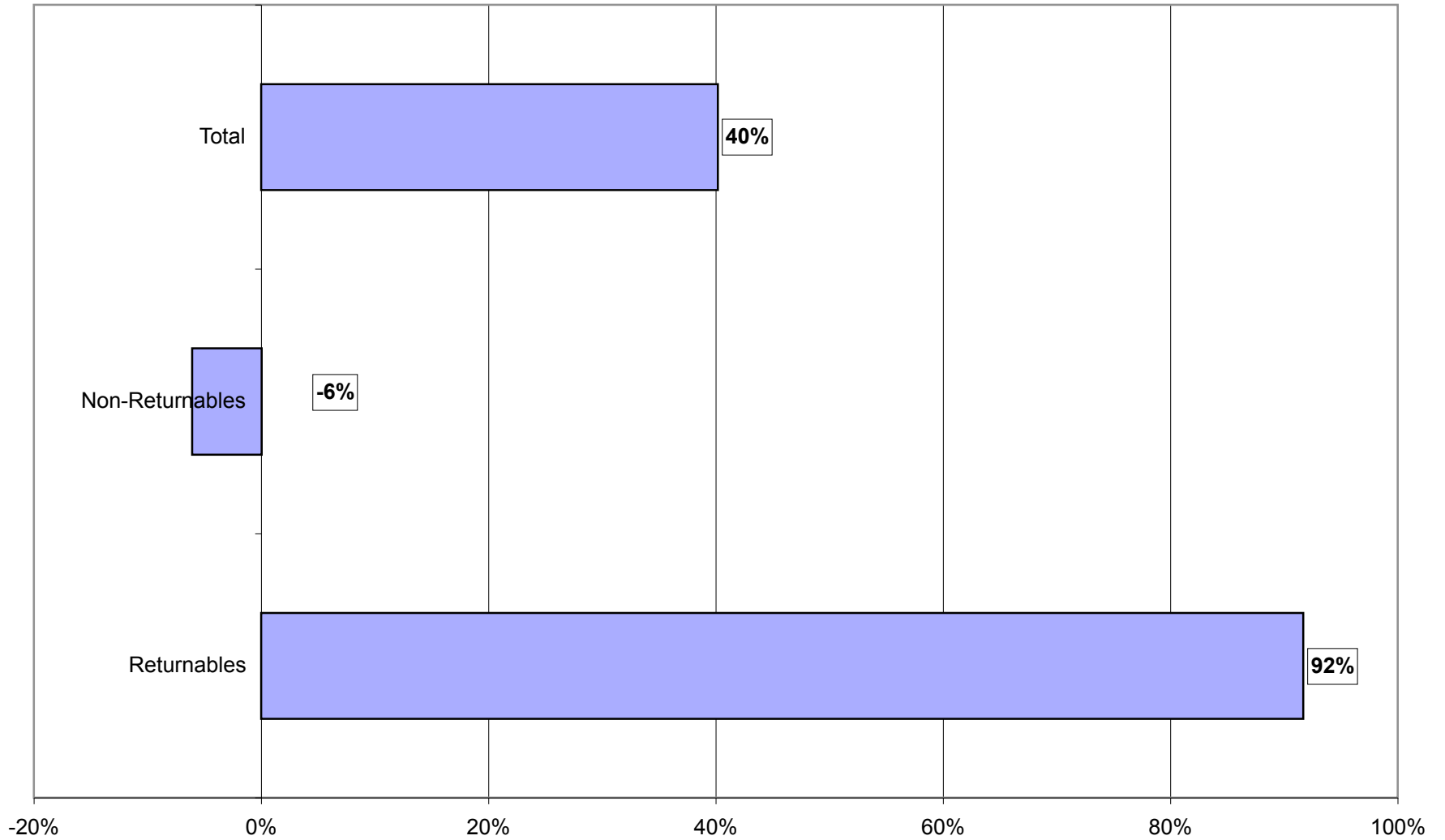
Percent Change in ILL Borrowing Last 10 Years



Percent Change in ILL Borrowing Last 10 Years



**Total Percent Change in ILL Borrowing
From 1997/98 to 2006/07**



ILL Borrowing Averages

	1997/98	1998/99	1999/00	2000/01	2001/02	2002/03	2003/04	2004/05	2005/06
Returnables	2,773	3,085	3,378	3,789	3,920	4,123	4,284	4,463	4,903
Non-Returnables	3,090	3,131	3,265	3,300	3,054	2,964	3,050	3,223	3,102
Total	5,863	6,216	6,644	7,089	6,974	7,087	7,334	7,686	8,005

Percent Change

	1998/99	1999/00	2000/01	2001/02	2002/03	2003/04	2004/05	2005/06
Returnables	11%	9%	12%	3%	5%	4%	4%	10%
Non-Returnables	1%	4%	1%	-7%	-3%	3%	6%	-4%
Total	6%	7%	7%	-2%	2%	3%	5%	4%

2006/07

5,314

2,902

8,216

10 year change

2006/07

8%

-6%

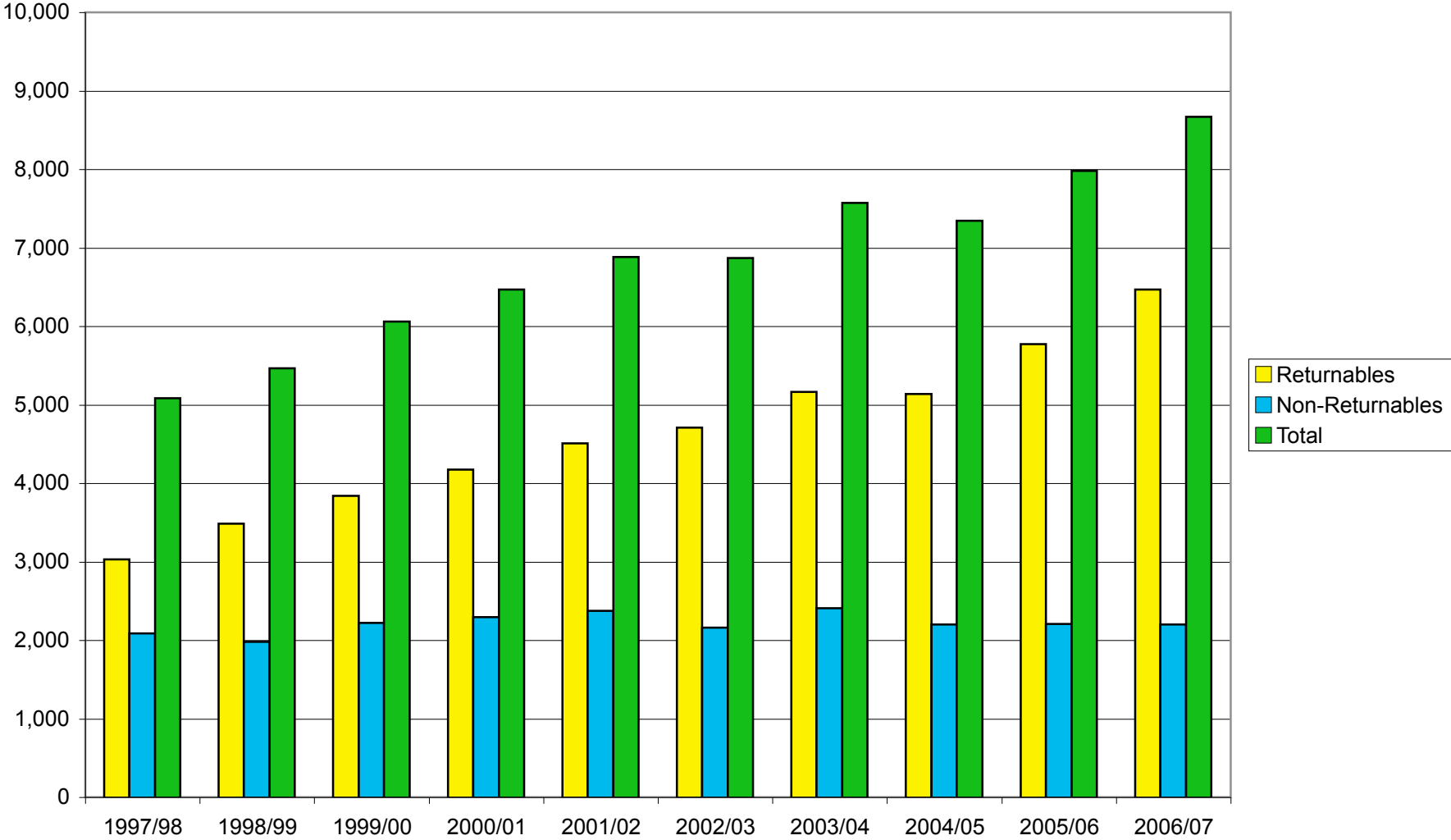
3%

92%

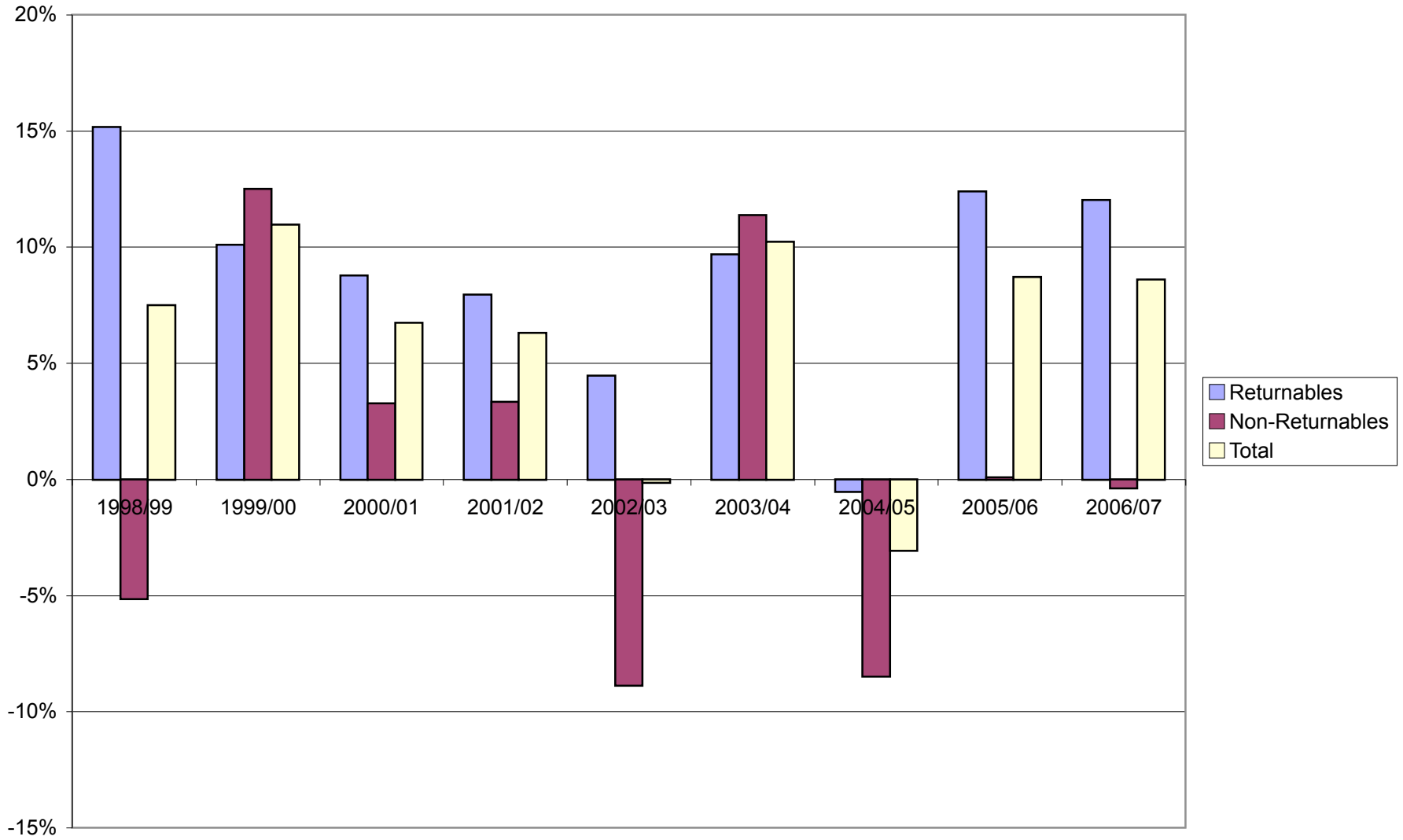
-6%

40%

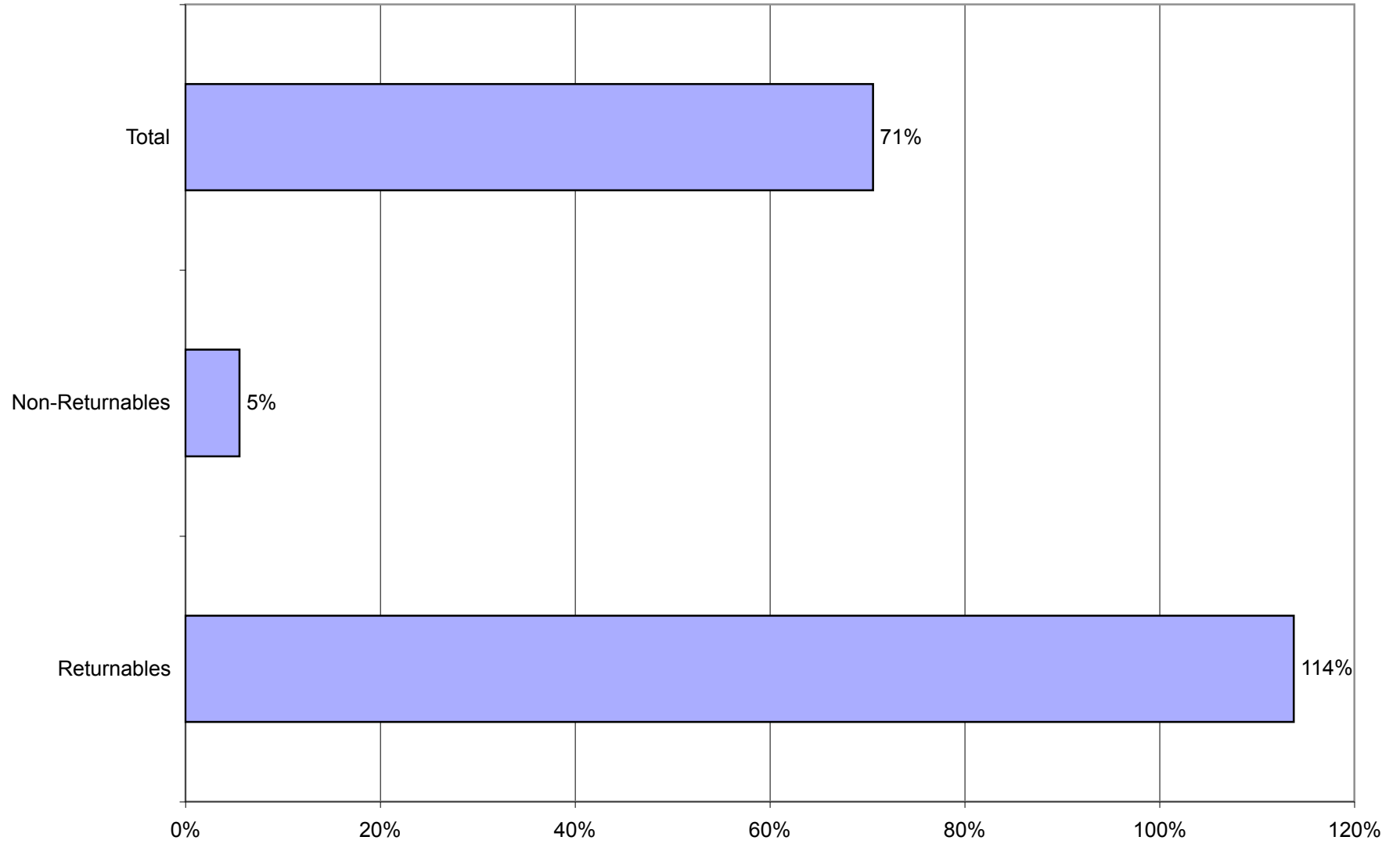
**ILL Lending Average
1997/98-2006/07**



Percent Change in Lending, 1997/98 - 2006/07



Total Percent Change in ILL Lending



ILL Lending

	1997/98	1998/99	1999/00	2000/01	2001/02	2002/03	2003/04
Returnables	3,027	3,486	3,839	4,175	4,507	4,708	5,165
Non-Returnables	2,084	1,977	2,224	2,296	2,373	2,162	2,408
Total	5,082	5,463	6,062	6,471	6,880	6,871	7,573

Percent Change in Lending

	1998/99	1999/00	2000/01	2001/02	2002/03	2003/04
Returnables	15%	10%	9%	8%	4%	10%
Non-Returnables	-5%	12%	3%	3%	-9%	11%
Total	7%	11%	7%	6%	0%	10%

2004/05	2005/06	2006/07	10 year change
5,138	5,775	6,470	
2,204	2,206	2,198	
7,342	7,981	8,668	

2004/05	2005/06	2006/07	10 year change
-1%	12%	12%	114%
-8%	0%	0%	5%
-3%	9%	9%	71%